

# 2023

## ANNUAL REPORT



**ESTABLISHED : 2008**  
**GLOBAL COMMUNITY ORGANIZATION**  
**GLOBAL COMMUNITY**



**50,000**  
**TREES PLANTED**

**GLOBAL COMMUNITY ORGANIZATION  
MADE AN INCREDIBLE IMPACT  
FOR THE ENVIRONMENT AND  
LOCAL COMMUNITIES**

**IN 2023,**  
**ALL THANKS TO YOU!**

\*Based on current reporting. Subject to change.



# WHY SOCIAL DEVELOPMENT PROJECT HIGHLIGHTS

- A. A Letter From Our Chairman
- B. A Letter From Chief Advisor
- C. A Letter From CEO
- D. A Year In Review
- E. Mission & Vision
- F. How We Operate
- G. 2023 Budget Breakdown
- H. Economic And Social Impact

## PROJECT HIGHLIGHTS

### 01. CLIMATE CHANGE

- 1.1 One Tree for One Child Initiative.
- 1.2 Nursery and Afforestation
- 1.3 Natural and Disaster Awareness Programme.
- 1.4 Safe life from the thunderstorms with plants
- 1.5 Plantation of shade-trees in public places.

### 02. HEALTH

- 2.1 Maternal and Child Health in Bangladesh Slums
- 2.2 Family Planning Service Scheme.
- 2.3 Water Supply and Sanitation Programme.

### 03. FOOD

- 3.1 Maternal & Child Nutrition in Char land
- 3.2 Addressing Hunger Among Bangladesh's Elderly.

### 04. EDUCATION

- 4.1 Pre-Primary Child Education.
- 4.2 Sub-Formal Education.

### 05. HUMAN RIGHTS

- 5.1 Development of social peace and harmony.
- 5.2 Women and Child Rights and Protection Programme.
- 5.3 Women empowerment and legal aid.
- 5.4 Disability Development Program.
- 5.5 Child marriage prevention and awareness.

### 06. TRAINING

- 6.1 Skill Development Training.
- 6.2 Vocational Training Handicrafts development.
- 6.3 Pond Digging and Fisheries Development.
- 6.4 Agricultural Development Training.

### 07. CELEBRATING DAYS

### 08. SELF-RELIANCE PROJECT

- 8.1 Abalamban - Self-reliance project for helpless children's families.

### 09. UNIQUE

- 9.1 Campaigns - Awareness campaigns on contemporary issues.
- 9.2 Events - Various events on current affairs.

## GLOBAL COMMUNITY, LOCAL IMPACT

- 10. Rajshahi
- 11. Natore
- 12. Sirajganj
- 13. Chapainawabganj
- 14. Pabna
- 41. Rural Forestry: 2023 Impact

## IMPACT ASSESSMENT & MONITORING

- 60. Site Visits
- 61. Monitoring

## PARTNERSHIPS FOR IMPACT

- 64. Our Amazing Partners
- 65. Collaboration is Key

# TABLE OF CONTENTS

# A LETTER FROM **OUR CHAIRMAN**

We are pleased to present the annual report on the programs implemented by the Global Community Organization (GCO) to improve the lives of underprivileged women and children across various regions, including the sub-regional areas of Rajshahi in northern Bangladesh. The social and economic conditions in these areas often lag behind modern advancements, making GCO's work vital in bridging these gaps.

GCO's activities are centered around environmental sustainability, women's empowerment, and child development. Over the past 17 years, GCO has made significant strides in these areas, continuously adapting our initiatives to meet the unique needs of the communities we serve while aligning with our organization's objectives. Despite the challenges of a limited scope, we take pride in standing by and supporting the helpless and disenfranchised women and children, striving for their development and empowerment.

The unwavering support of the Executive Council and the General Council has been instrumental in the successful implementation of our programs. Currently, GCO is actively working in 26 Unions and 5 Municipalities, leveraging the dedication and skills of our trained staff and volunteers to make a meaningful impact.

We extend our heartfelt gratitude to everyone who has directly or indirectly contributed to the preparation of this annual report. Our deepest thanks go to our partners and donors for their unwavering support, which has been crucial to our efforts. We look forward to continuing our work to uplift the communities we serve and making a significant difference in their lives.

Sincerely,

**Aminul Islam**

Chairman

**Global Community Organization**





# A NOTE FROM THE CHIEF ADVISER

In the journey of national development, both government and non-governmental organizations (NGOs) have played a vital role. However, it is clear that the resources and capacity of government agencies alone are insufficient to meet the growing needs of the nation. Complex management systems and resource limitations often delay the delivery of essential services, leaving many deprived of fundamental support. At the grassroots level, the immense potential of the underprivileged population remains untapped, with their talents and leadership left undeveloped. Poverty, hunger, illiteracy, malnutrition, homelessness, and unemployment continue to dominate their daily lives.

In response, private development organizations emerged in Bangladesh after independence, committed to socio-economic empowerment and addressing the needs of marginalized communities. Today, numerous NGOs operate locally and nationally, delivering impactful programs with integrity and efficiency. These organizations focus on uplifting vulnerable groups, including women, children, and the elderly, while addressing critical areas such as poverty alleviation, education, health, and environmental sustainability.

Bangladesh has made remarkable progress, transitioning from an underdeveloped to a developing nation. Yet, significant challenges remain. Many still struggle for basic necessities, while a lack of skills, education, and technological advancement hinder broader progress. Addressing these issues requires robust human resource development to transform potential into productivity—a vision central to our organization.

Since 2008, the Global Community Organization (GCO) has dedicated itself to empowering communities through targeted development initiatives. Officially approved by the Department of Social Services in 2014, GCO continues to work tirelessly under the leadership of Aminul Islam. We aim to uplift lives, foster self-reliance, and build a prosperous, sustainable future for all.

Together, we can transform challenges into opportunities and ensure no one is left behind in Bangladesh's development journey.

Sincerely,

**Prof. Dr. Amin Uddin Mridha**

Chief Adviser

**Global Community Organization**



# A NOTE FROM THE CEO

In all stages of national development, government organizations as well as various working non-governmental development organizations of the country are playing a noteworthy role. It has become evident that the strength and capacity of the government agencies are not enough to deal with the growing needs and problems of the country. As a result, government services and facilities have become possible for the majority of people in different regions of the country, but due to the complexity of management, it is not considered timely and sufficient. As a result, most of the people in the country are deprived of the necessary services. A large number of poor people with potential at the local level are not being properly developed and their latent talents and leadership are not being adequately utilized. Poverty, hunger, illiteracy, malnutrition, poverty, homelessness and unemployment are their daily companions.

Private development organizations were born in this country after independence with the aim of socio-economic development of these deprived poor people with a strong oath of humanity. At present, numerous large and small private development organizations are working at the local and national level. Non-Governmental Development Organizations have been gradually moving towards sustainability by working with considerable integrity, efficiency and success since inception. The organization has been carrying out various developmental works through its capacity with the aim of socio-economic development of the local poor people especially the environment, distressed elderly women, men and children.

Bangladesh from an underdeveloped country has just become a developing country. While the developed countries of the world are living in modernity, the people of Bangladesh have to fight regularly to provide two handfuls of food. The number of such people is constantly increasing every day. We have a large population but are unskilled. Educated people are few in number but lack of proper guidance and proper use of advanced technological resources is observed in all areas. One of the reasons is human inefficiency. Most of the older population is living at the lowest level of living standards. Lack of education, lack of food, lack of proper environment and lack of recreation are mainly responsible for this condition. Financial poverty is in everyone's blood. In order to improve this vast population, there is a need for competent and skilled people. At the root of everything, it is necessary to make people useful for work. That requires human resource development and that is the main slogan of our organization.

Since 2008, Aminul Islam started various development activities. After this long journey, in 2014, the Global Community Organization was approved by the Department of Social Services of the Government of Bangladesh.

Sincerely,

**Dr. Nizhum Rahman**

Chief Executive Officer

**Global Community Organization**





# A YEAR IN REVIEW

Rajshahi is a border district in Bangladesh where the common people often face economic challenges, lacking reliable sources of income. In response to these conditions, the Global Community Organization (GCO) has implemented a series of targeted programs and initiatives aimed at empowering the community and addressing critical issues. These initiatives include workshops, exchange meetings, and yard meetings focusing on various topics such as distributing trees to newborn children, promoting gender equality, ensuring access to healthy food and nutrition, and preventing trafficking of women and children. These efforts are supported by the One Tree for One Child project with One Tree Planted.

To foster social peace and harmony, GCO has organized meetings to resolve family disputes and prevent dowry practices, child marriage, and drug abuse. As part of our commitment to education, we provide free educational materials to 300 children under the primary education scheme at pre-primary child education centers. Additionally, GCO has taken the initiative to support disabled individuals by providing physical exercise programs and assistive devices.

In collaboration with GlobalGiving, GCO has launched children's rights and protection projects, including activities for Rajshahi City Corporation students and their parents. These activities include parent gatherings, the formation of children's forums and village committees, regular meetings, public discussions, cultural performances, and the creation of wall newspapers. We also organize Children's Rights Day celebrations, children's fairs, and dialogue meetings with government officials.

GCO has also partnered with Microsoft and SkyHost Bangladesh to promote the rights of women working in handicrafts through monthly meetings, seminars, and the celebration of Women's Day. Additionally, in collaboration with Nari Udyog Kendra Dhaka, GCO organizes meetings and seminars on women's rights.

As we continue to address these vital issues, GCO remains committed to advancing our mission of supporting and empowering women and children in the Rajshahi district and beyond.

<b>21,177</b>		<b>18</b>
<b>BENEFICIARY</b>	<b>50,033</b>	<b>PROJECTS</b>
<b>1</b>	<b>TREES PLANTED</b>	<b>5</b>
<b>COUNTRIES</b>		<b>DISTRICT</b>

\*Based on current reporting. Subject to change.



# MISSION VISION

## **Mission:**

- To develop healthy, standardized, improved living system and sustainable environment is the only goal.

## **Vision:**

- To empower disadvantaged and backward communities and take necessary measures, including nutrition, for healthy, standardized and improved livelihoods of future generations.
- To develop Global Community Organization by forming a non-communal, non-political social culture.
- To develop community and coordinating various social, state organizations which involved in social and humanitarian welfare and taking necessary measures to expedite their work.

## **Aim of the organization:**

At the grassroots level, we aim to enhance socio-economic conditions by engaging poor and marginalized groups in production-oriented activities, thereby increasing their capacity and capability.

## **Purpose of the organization:**

- Efforts to organize and raise awareness among poor communities and help them achieve financial independence were previously lacking.
- To promote women's rights, economic and conscious growth.
- To assist in establishing the rights of disenfranchised people.
- To raise awareness about the importance of maintaining environmental balance.





# HOW WE OPERATE

During the financial year 2023, the Global Community Organization (GCO) implemented several activities to manage and oversee the office operations effectively. These activities included:

- **General Council Meeting:** 1 meeting held to discuss and decide on key organizational matters.
- **Executive Committee Meetings:** 5 meetings conducted to review progress and make strategic decisions.
- **Staff Meetings:** 6 meetings specifically focused on forestry projects to coordinate and plan activities.
- **Volunteer Meetings:** 4 meetings organized to engage and guide volunteers in various initiatives.
- **Special Meetings:** 3 meetings convened to address urgent or specific issues.

To ensure efficient office management, all necessary files and ledgers have been meticulously organized and stored. The office rent, project office rent, field allowances, and staff salaries have been paid punctually. Additionally, monthly and quarterly reports of the activities have been regularly submitted to the subsidiary organizations, maintaining transparency and accountability.

## Organization Profile

SI No	Details	Full Time	Part Time	Voluntary	Total
1	Head Office	4	6	22	32
2	Field Management Office	6	0	3	9
3	Branch Office	3	5	20	28



# 2023

# BUDGET BREAKDOWN

BUDGET	TOTAL SPENT	% OF TOTAL
Tree Planting	5803828	55%
Food	339800	3%
Health	294567	3%
Human Rights	176543	2%
Self Reliance	869000	8%
Training	165890	2%
Campaign	78000	1%
Operations	578900	6%
Staff	960000	9%
Marketing	58900	1%
Travel	67890	1%
Office	480000	5%
Technology	390000	4%
Professional Fees	200000	2%
<b>Total</b>	<b>10463318</b>	<b>100%</b>



PROJECT  
**HIGHLIGHT**  
CLIMATE CHANGE



# ONE TREE FOR ONE CHILD

The organization was established in 2008 and officially recognized in 2014. A new horizon was launched in 2018 with an outstanding goal and objective titled “One Tree for One Child– Green Earth for Child”.

The One Tree For One Child program was officially launched on Thursday, August 23, 2018 in Narayanpur area of Bagha Upazila of Rajshahi district as a pilot project.

## Mission

- Building green earth and socio-economic development by building livable, safe, secure society for children.

## Vision

- Ensuring the gift of a tree to every new born baby.
- Collecting data on each newborn baby.
- Providing services based on need and demand of underprivileged children selected among the beneficiary children.
- Encouraging tree planting and creating awareness on tree conservation, expanding the program by directly engaging in social forestry and developing socio-economic development.
- Building a green world by protecting the balance of the environment and playing a supporting role in combating climate change, environment and helping to combat climate change.





CELEBRATING **50000**  
**THOUSAND**  
**TREE**

# IMPACT TO DATE

In One Tree Planted's first year of planting trees, we planted 50,000 trees under the One Tree for One Child Project - but from those humble roots, the organization has grown into a global force for good.

Every year, we got more trees in the ground, engaged with more communities, empowered more planting partners, and expanded our reach into more geographies.

And in June of 2023, we proudly celebrated the incredible milestone of 50000 planted since our inception.

By the end of 2023, we had reached a total of 87915 trees planted to date.

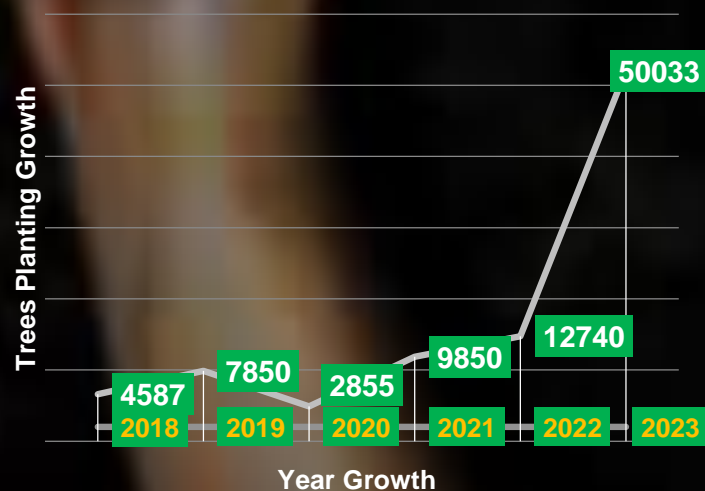
One Tree Planted's incredible growth trajectory wouldn't have been possible without the support of individuals, businesses, and foundations that care. Truly, we couldn't have done it without you!

# 87915

## TREES PLANTED TO DATE

### 3 PLANTING PARTNERS TO DATE

### 5 DRISTRIC PLANTED INTO DATE





”

**JUST AS NURTURING A CHILD  
ENSURES THEIR BRIGHT FUTURE,  
CARING FOR TREES ENSURES  
A BEAUTIFUL ENVIRONMENT FOR THEM.  
AMINUL.**










# NURSERY AND AFFORESTATION

Humans cannot live without oxygen. Without green trees, plants do not produce oxygen. So trees are necessary for human survival. More trees are needed to maintain the balance of the environment. More afforestation is needed. In addition to official and non-official forestry, therefore, the Global Community Organization has placed more emphasis on nurseries and forestry. The Global Community Organization undertakes various programs for planting trees and provides training to the unemployed youth of the region. Also making them self-reliant by creating fruits gardening, nurseries/forestry.



Serial No	Details	Group	Attendance			YEAR
			Male	Female	Total	
1	Nursery	4	15	5	80	3
2	Afforestation	6	20	4	144	2



# NATURAL AND DISASTER AWARENESS

Bangladesh, as a developing country in Southeast Asia, faces significant challenges due to its vulnerability to natural disasters. These events frequently disrupt the socio-economic structure and cause substantial damage to the national economy, hindering the country's overall development plans. The recurrent disasters also contribute to a vicious cycle of poverty, affecting the lives of many citizens.

While it may not be possible to completely prevent natural disasters, proactive measures can significantly reduce their impact. This includes advance preparation and the implementation of well-planned mitigation strategies to protect property and lives. The Global Community Organization (GCO), since its inception, has been actively working to raise awareness about these issues and assist communities in coping with and recovering from disasters. This work aligns with the goals outlined in Bangladesh's Poverty Alleviation Strategy Paper, emphasizing the need for disaster preparedness and resilience to support sustainable development and break the cycle of poverty.

SI No	Details	VILLEGE MEETING	Attendance		
			Male	Female	Total
1	Advocacy related to floods and landslides	3	30	20	50
2	Workshop on Environment Conservation	3	30	40	70
3	Workshop on drought and extreme rains	3	30	20	50
4	Fire awareness meeting	3	40	25	65



# SAFE LIFE FROM THE THUNDERSTORMS WITH PLANTS PROGRAMME

In recent years, Bangladesh has experienced an increase in lightning strikes, leading to significant loss of life. The Bengal palm, a popular fruit tree, plays a crucial role in the local ecosystem and culture, with a saying emphasizing its importance. Recognizing the need to protect the environment and reduce lightning-related fatalities, Prime Minister Sheikh Hasina in 2017 directed the planting of palm trees along roadsides nationwide. This initiative, part of the Kabikha-TR project, was supported by the Global Community Organization (GCO), which has consistently conducted tree planting programs during the monsoon season and throughout the year.

Palm trees, with their high carbon content and thick bark, are particularly effective in preventing lightning strikes. Their height and structure also contribute to this protective effect. In addition to palm trees, tall trees like coconut and areca nut trees are similarly beneficial in mitigating lightning risks. GCO is committed to expanding this effort into a social movement, advocating for the planting of these trees to protect nature and enhance community safety. The organization emphasizes that protecting nature is essential for addressing natural threats like lightning, which poses a danger not only to Bangladesh but to the world at large.



# PLANTATION OF SHADE-TREES IN PUBLIC PLACES

The Global Community Organization (GCO) has undertaken initiatives to plant various types of trees that provide shade and enhance the environment in public gathering places like bazaars. These trees include:

- **Banyan:** Known for its extensive canopy and air-purifying qualities.
- **Horsetail:** Provides shade and has unique aesthetic qualities.
- **Tamarind:** Offers shade and produces edible fruit.
- **Mahogany:** A durable hardwood tree that also provides substantial shade.
- **Raintree:** Known for its large, umbrella-like canopy.
- **Krishnachura (Flame of the Forest):** Notable for its vibrant flowers and ample shade.

These efforts by GCO aim to improve public spaces, provide relief from the sun, and contribute to environmental sustainability.



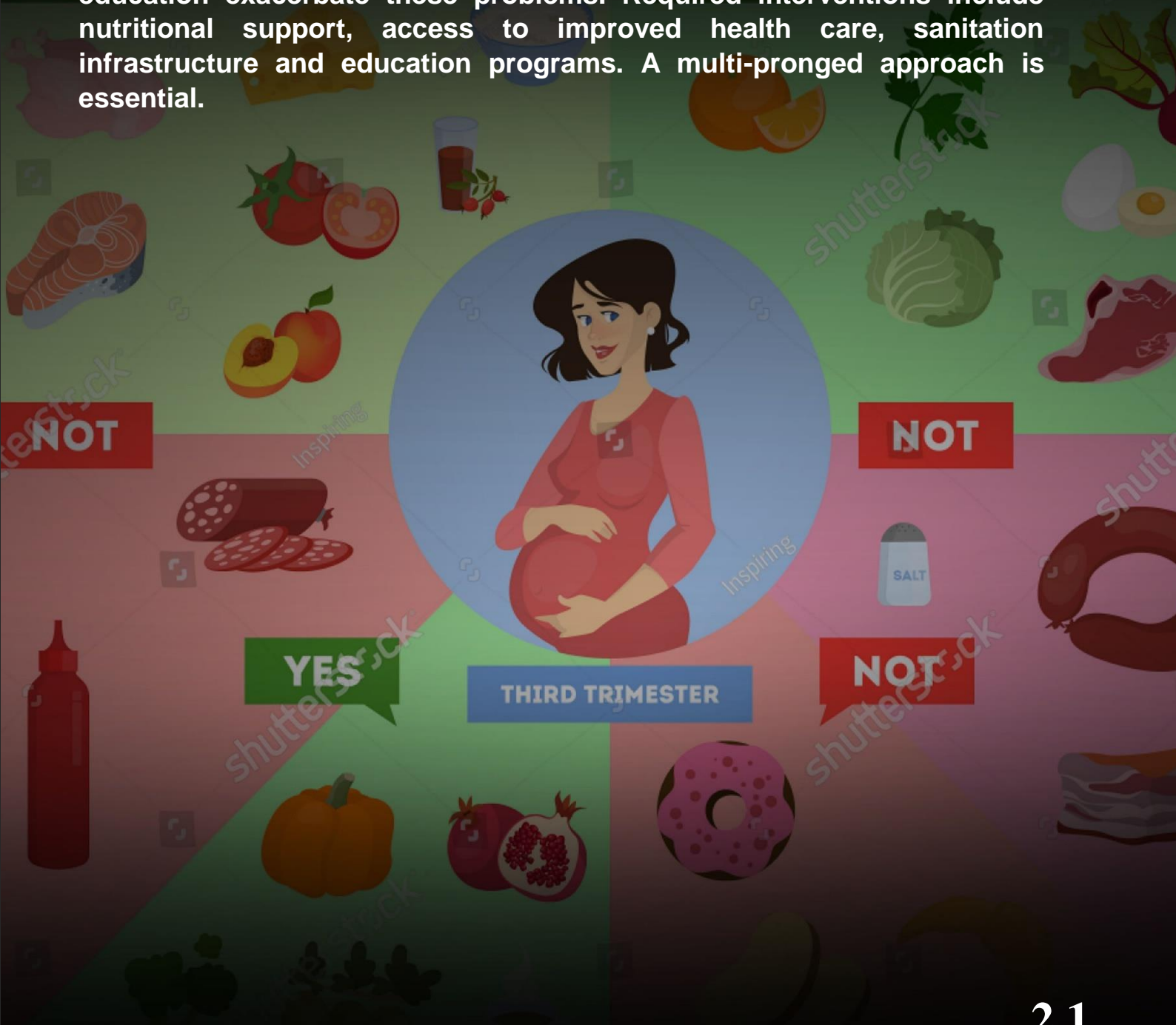
# PROJECT HIGHLIGHT HEALTH





# MATERNAL AND CHILD HEALTH IN BANGLADESH SLUMS PROGRAMME

Despite economic growth, Bangladesh's urban slum population faces significant health challenges. Overcrowding and unsanitary conditions lead to high rates of maternal and child malnutrition and morbidity. Factors such as poverty, limited healthcare, poor sanitation and low education exacerbate these problems. Required interventions include nutritional support, access to improved health care, sanitation infrastructure and education programs. A multi-pronged approach is essential.



# FAMILY PLANNING SERVICE PROGRAMME

Family planning is planning to have children at the right time and ensuring proper use of birth control and other methods. Other methods include prevention and management of sexually transmitted infections. Family planning is often equated with birth control although the scope of family planning is more detailed. Global Community Organizations provide training on proper family planning.

Family planning services refer to educational, comprehensive health and social programs that enable each individual to make independent decisions about the number and spacing of their children.

purpose



The need for time, social, economic and environmental security increases with increasing number of children. Adoption of family planning ensures effective utilization of these resources. Population growth in Bangladesh as well as around the world is making the world uninhabitable and creating problems. Therefore, family planning is necessary to balance the world by preventing population growth or having moderate births.



# WATER SUPPLY AND SANITATION

# PROGRAMME

Bangladesh is one of the poorest countries in the world. Our country is very backward in terms of education. Blindness and superstition prevail among the people of this country due to poverty and illiteracy. Because of this they are not careful about food and health. As a result they are living in unhygienic environment, drinking contaminated water. Not being able to use sanitary latrines and clean water with caution and affordability.

Being affected by various diseases and dying prematurely. The Global Community Organization has been working for a long time to solve these problems. For this purpose, monthly meetings and workshops are being organized among the people of different parts of the country and various works are being done for the construction and use of sanitary toilets and the use of clean water. In order to make these activities practical, along with the government support, the organization is making arrangements to install sanitary toilets and cisterns among the beneficiaries. It is expected to be implemented more successfully with the support of donor agencies.

Serial No	Details	Group	Attendance		
			Male	Female	Total
1	Hand washing program	150	40	70	110
2	Courtyard meeting	150	65	75	140
3	Seminar	200	50	40	90
4	Discussion meeting	60	40	10	50
5	Orientation	50	30	10	40
6	Workshop	50	25	10	35

# PROJECT **HIGHLIGHT** FOOD

2.3





# MATERNAL AND CHILD NUTRITION AWARENESS IN EVACUATION AREAS PROGRAMME

Women's empowerment and ensuring proper maternal and child nutrition are essential for healthy lives. Poor residents of Bangladesh's grasslands face displacement, limited health care and food insecurity. Adequate maternal nutrition ensures optimal fetal development and reduces perinatal complications, while malnutrition stunts growth and perpetuates poverty. Addressing malnutrition requires comprehensive health care, access to nutritious food, and promoting community health and development.



3.1

# DISTRIBUTION OF FOOD AMONG HUNGRY ELDERLY

**Food for the Elderly: Facing the grim reality of Bangladesh's elderly living in extreme poverty and hunger demands urgent attention and concerted action. With scarce resources and meager livelihoods, many struggle daily for food. Their struggles reflect not only humanitarian concerns but also calls for collective action. Limited resources and inadequate social support exacerbate their plight, urging us to address their plight with urgency and compassion.**





A young girl with dark hair, wearing a red headscarf and a white school uniform, is sitting at a desk in a classroom. She is holding an open book and looking down at it intently. She has several colorful beaded bracelets on her left wrist. In the background, other students in school uniforms are visible, though they are out of focus. The lighting is soft, highlighting the girl's face and the book.

**PROJECT**  
**HIGHLIGHT**  
**EDUCATION**

# PRE-PRIMARY CHILD EDUCATION PROGRAMME

The Global Community Organization operates 12 pre-primary children's education centers. Besides, it is being managed on its own initiative. Parent meetings in pre-education programs, parent meetings in sub-formal education and parent meetings in tutoring centers are conducted. The pre-school program organizes annual sports competitions and prize distribution events. Upazila Social Service Officer, Assistant Education Officer and Cooperative Officer and Project Manager were present in this event.

Serial No	Details	Center	EDUCATION	Attendance		
				Male	Female	Total
1	Early childhood education	12	12	84	216	300
2	Reading Center	1	1	20	20	40



# SUB-FORMAL EDUCATION PROGRAMME

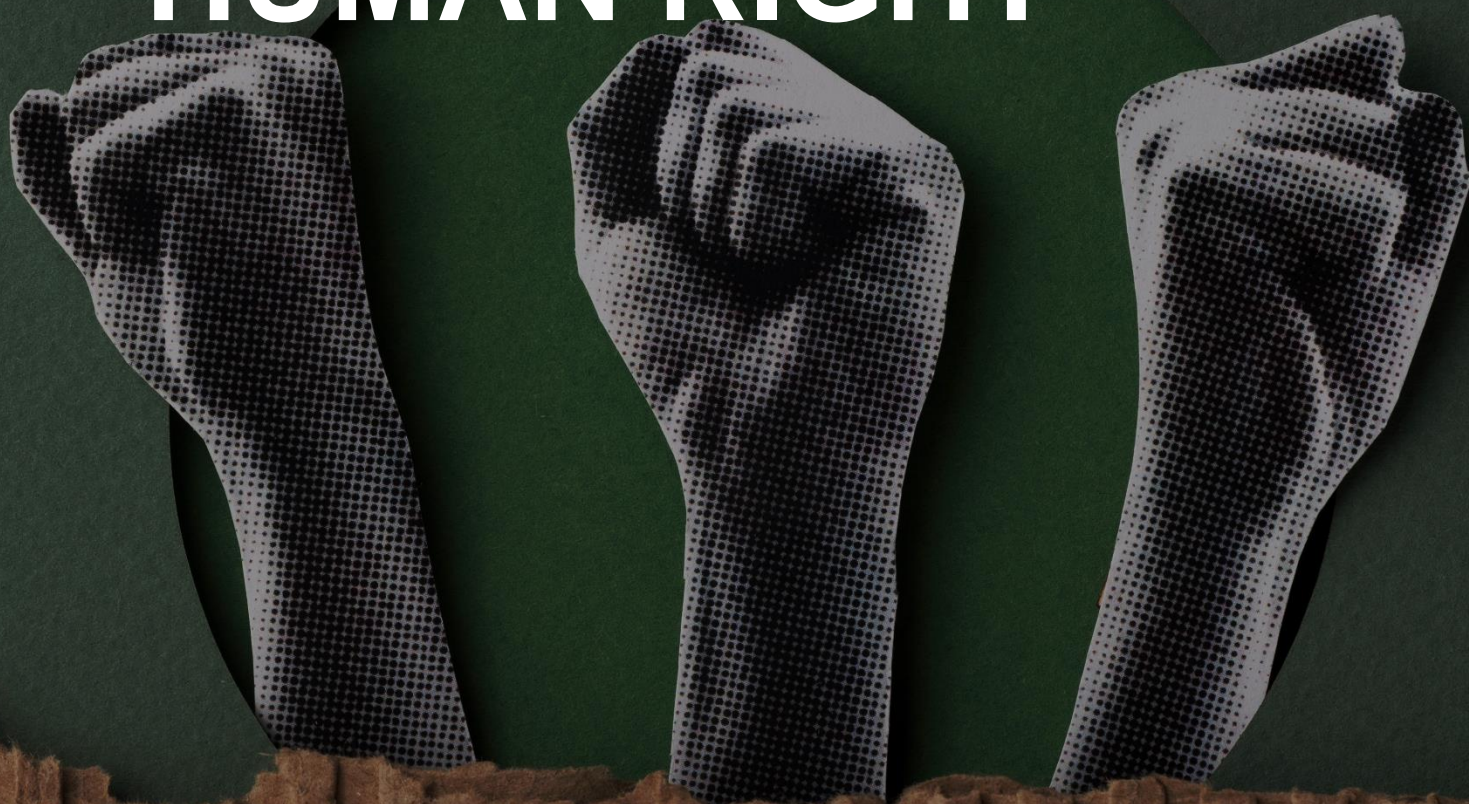
Teaching programs conducted outside schools, colleges, madrasas, technical educational institutes, universities. This activity can be conducted at any place convenient for the students. Non-formal education is basically an educational program for poor people. In this, illiterate people of any age are taught basic subjects such as letters, writing, calculation, arithmetic, mental writing etc. At the same time students are given knowledge about society, environment and everyday science. Non-formal education is not only for out-of-school students, but also those who 'drop out' of school due to poverty and other reasons, the Global Community Organization has opened up to sub-formal education.

Serial No	Details	Center	EDUCATION	Attendance		
				Male	Female	Total
1	Sub-formal education	12	12	84	216	300
2	Reading Center	1	1	20	20	40



4.2

PROJECT  
**HIGHLIGHT**  
HUMAN RIGHT





# DEVELOPMENT OF SOCIAL PEACE AND HARMONY PROGRAMME

Serial No	Details	Attendance		
		Male	Female	Total
1	Discussion meeting -12	210	10	220
2	Courtyard meetings-10	272	8	280
3	Workshop-3	60	5	65
4	Exchange meetings-2	60		60

According to the annual work plan for the Social Peace and Harmony Development Program for the financial year 2023-2024, workshops, courtyard meetings, and discussion sessions were successfully conducted. This program addressed topics such as family dispute resolution, dowry prevention, and the prevention of women and child trafficking within the community.

## Successful aspects of the program:

- Family conflicts in the work area have reduced somewhat.
- To establish family peace, the husband knows the aspects to be done by the wife.
- Know the causes of trafficking.
- Know the causes and prevention of child marriage and dowry.
- Weaknesses of the programme.
- There was family turmoil.
- There was turmoil between husband and wife.
- Dowry and child marriage had huge impact.
- There was lack of awareness on social responsibility.

# WOMEN AND CHILD

5.1

# RIGHTS AND PROTECTION PROGRAMME

In the last fiscal year, under the Child Rights and Protection Awareness Project, 6 children forums were formed and held, 3 village committees were formed and held, 8 parent assemblies, 1 public assembly, 4 Jarigans, Shishumela-1 wall papers- 6, Natak-6 Adhipramarsh. Forum meeting- 2, Manav Bandhan- 1 organized. From which there has been a positive impact of ensuring child rights in the

Serial No.	Details	Attendance			
		Female	Male	Child	Total
1	Children's Forum Meeting			50	50
2	Village committee	2	40		42
3	Guardian assembly	170	90		400
4	mass gathering	80	70		250
5	wall paper			200	200
6	Children's fair	20	15	150	250





# WOMEN EMPOWERMENT AND LEGAL ASSISTANCE PROGRAMME

Empowerment is the process of gaining control over one's own life, society, and community. People become empowered when they overcome barriers related to their education, occupation, and lifestyle, enabling them to take advantage of available opportunities. A sense of empowerment arises when individuals feel confident in making their own decisions. This process includes raising awareness, literacy, and training initiatives that promote women's dignity through education. Women's empowerment allows women to make life-defining decisions within society. Global Community Organization supports women in developing their own values through various empowerment activities.

A group of women, many wearing colorful saris, are gathered outdoors. They are holding up numerous red signs or banners, some of which appear to have text on them. The scene suggests a community event or a protest. The background shows trees and a building.

Additionally, providing free legal services to the helpless, poor, and marginalized people of Bangladesh is a significant government initiative. This decision marks a historic milestone in the country's judiciary, offering legal representation to disadvantaged individuals through free government legal services. This initiative has been particularly impactful in empowering women, with the government legal aid programs making significant contributions to this cause. The Global Community Organization actively participates in these programs, working in remote areas to support women's empowerment and advocating for increased government awareness and assistance in legal matters.

# DISABILITY DEVELOPMENT ACTIVITIES

In the financial year 2023-2024, the National Disability Day is observed through the Disability Development Program and regular exercise for the physically challenged. A press conference and a peaceful sit-in at Rajshahi Bus Terminal were organized to ensure accessibility of the disabled in all areas with the support of the National Disability Forum. People from all walks of life including the disabled were present here. At the end of the stay, a memorial letter was presented to the Rajshahi District Commissioner. Apart from this, goat rearing activities are ongoing with the aim of creating self-employment for the disabled.

Serial No	Details	Group	Attendance		
			Male	Female	Total
1	School going program	3	20	25	45
2	Treatment program	3	15	20	35
3	Legal programs	2	5	20	25
4	Vocational Assistance Program	2	10	15	25
5	Exchange of views program	5	25	30	55
6	Rights assembly programme	3		30	30

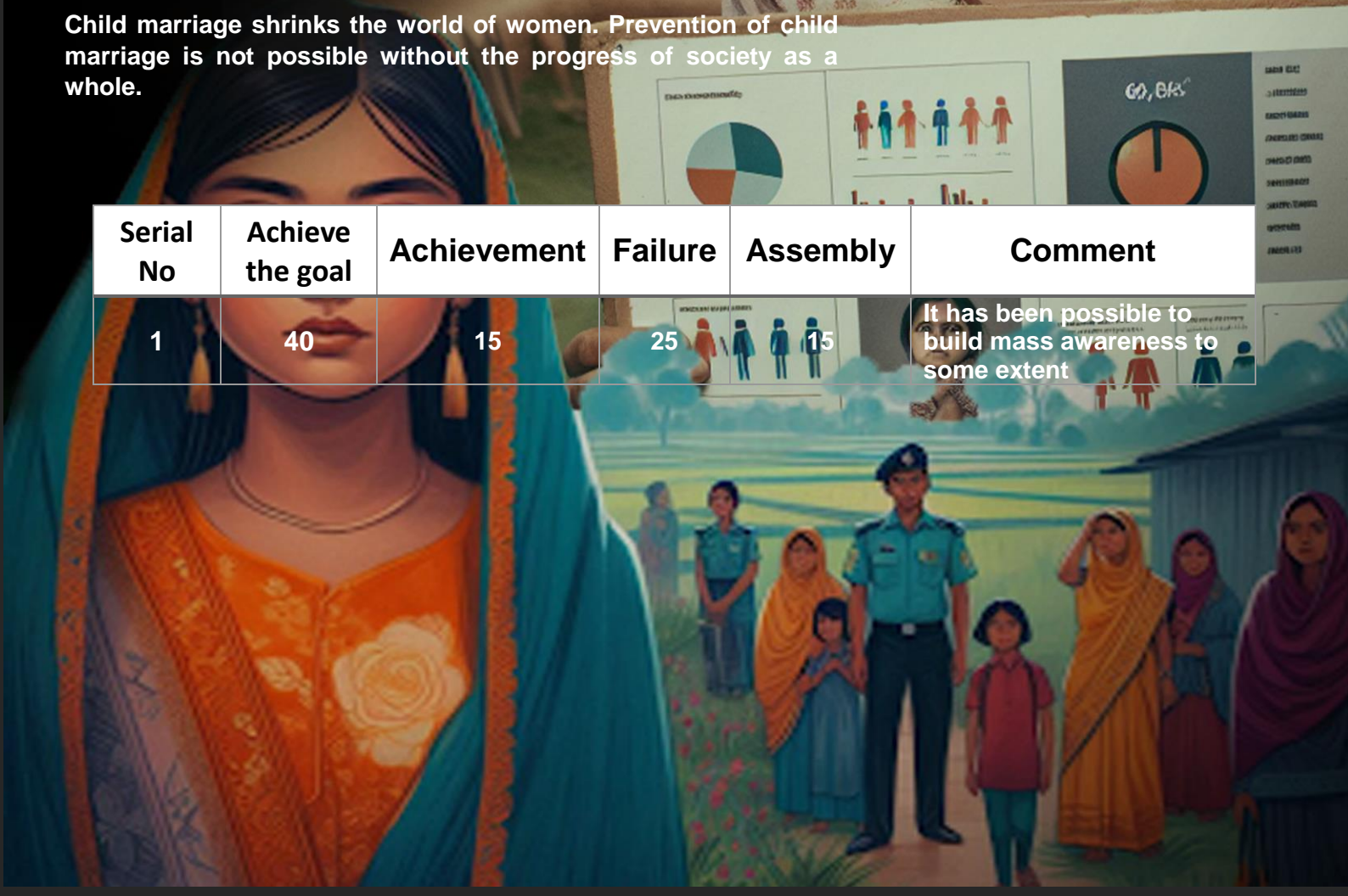
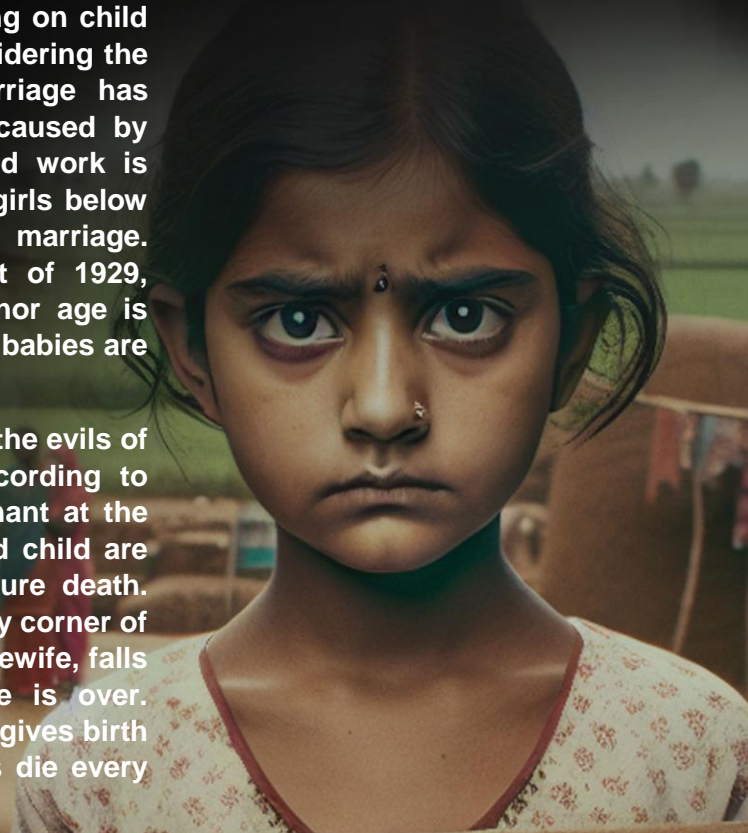


# CHILD MARRIAGE PREVENTION AND AWARENESS

The Global Community Organization has been working on child marriage programs since its inception. Because considering the socio-economic context of the country, child marriage has emerged as a very serious problem. Wounds are caused by ignorance and superstition in society. Village based work is being done to eradicate and cure them. Marriage of girls below 18 years and boys below 21 years is called child marriage. According to the Prevention of Child Marriage Act of 1929, marriage of boys and girls during childhood or minor age is defined. Death rates of teenage mothers and newborn babies are also increasing due to child marriage.

If parents or social, religious leaders are not aware of the evils of child marriage, then its practice will continue. According to statistics, 20% of girls in Bangladesh become pregnant at the age of 15 due to child marriage, and the mother and child are facing mortal risks, falling into the arms of premature death. Harmful aspects of child marriage are reflected in every corner of society today. A girl becomes a wife, becomes a housewife, falls from one family to another before her school life is over. Eventually she becomes a mother at a young age and gives birth to a malnourished child. As a result, 60,000 mothers die every year.

Child marriage shrinks the world of women. Prevention of child marriage is not possible without the progress of society as a whole.



Serial No	Achieve the goal	Achievement	Failure	Assembly	Comment
1	40	15	25	15	It has been possible to build mass awareness to some extent



# PROJECT HIGHLIGHT TRAINING





# SKILL DEVELOPMENT TRAINING

Skilled manpower is the wealth of the country. Proper realization of the latent talent that exists in people requires proper medium, skill development and turning them into human resources.

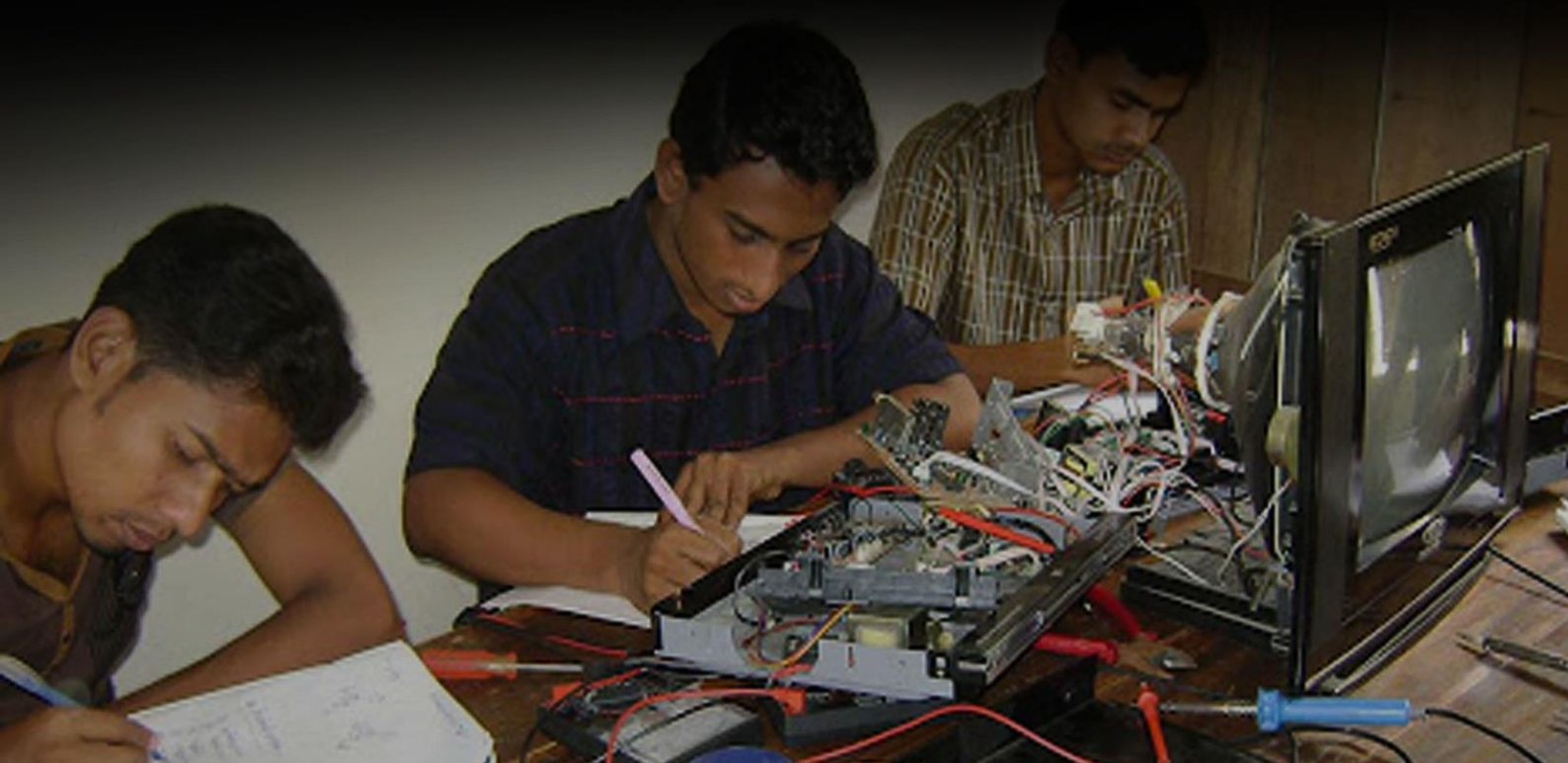
The Global Community Organization has been working for a long time to develop the skills of rural adolescents. Due to financial constraints, it is not possible to implement to a large extent. Still, we are committed to improving efficiency. During the year the organization also organized training in various trades for skill development. By which many have been able to achieve success.

The Global Community Organization has provided training in all trades for skill development.

Serial No	Details	Month	Attendance		
			Male	Female	Total
1	Sewing	12	5	20	25
2	Mobile Servicing	10	12	10	22
3	Batik/Block	5	5	20	25
4	Computers and Freelancing	15	30	20	50
5	Electronics	15	15	0	15
6	Poultry farming	70	25	25	50
7	cattle rearing	70	25	25	50
8	Fresh beef fat	70	25	25	50
Total					

# VOCATIONAL TRAINING HANDICRAFT DEVELOPMENT

In the economic development of Bangladesh, the role of women working in handicrafts at home is no less, but their work is not recognized. When it was said to give free medical allowance, retirement allowance to women working in handicraft industry, it has not been implemented even in Bangladesh. Therefore, Global Community Organization is working tirelessly in collaboration with Bawa Dhaka to make them aware of their rights.



Serial No	Details	Attendance			comment
		Male	Female	Total	
1	Weaving industry	20	03	23	
2	Manufacture of bamboo and cane products	25	10	35	
3	Radio Mechanical	15	10	25	
	Total				



# POND DIGGING AND DEVELOPMENT FISHERIES PROJECT

Bengali fish and rice. Bengali food is not complete without fish. In spite of having numerous rivers and canals in Bangladesh and due to lack of their proper use, there is a shortage of fish in the country day by day, the fishery economy is getting ruined. Since the establishment of the Global Community Organization, how to make the unemployed youth self-reliant by cultivating the doba-nala and uncultivated ponds in the remote areas of the country. He arranged training for that. Through this training the unemployed youth of the country got their employment. Besides, they are playing a special role in the development of the country's economy by farming fish. Global Community Organization focuses on fisheries training as follows:

- Which type of fish should be cultivated in which type of pond.
- Ways to identify ponds suitable for fish farming.
- Food application method.
- How to build a pond.
- Application methods of fertilizers and pesticides.
- Any type of fish should be released in any national pond.
- How much volume of fish should be released in the pond?

Serial No	Details	Group	Duration	Per-group	Total
1	Training on cotton fish farming	4	2	25	100
2	Training on Grass carp Fish Farming	2	2	30	60
3	Training on silver carp fishery	3	1	25	75
4	Training on Katla/Rajputi fish farming	3	2	25	75
5	Training on mixed fish farming	3	1	25	75
Total					

A photograph of a middle-aged man with a white beard and mustache, wearing a white t-shirt and a white cap. He is smiling and holding a long, green, bumpy vegetable (possibly a bitter melon) in his right hand. He is standing in a field with green foliage in the background. The text 'AGRICULTURAL DEVELOPMENT TRAINING' is overlaid on the top left of the image.

# AGRICULTURAL DEVELOPMENT TRAINING

Subject wise and area wise technologies/topics are selected for training. Farmers are imparted hands-on training on advanced agricultural technology models/patterns/methods etc. Monitoring including field visit/counseling at various stages of plot and farmer selection for hands-on training in appropriate field application techniques and sample cutting and report preparation. Based on the opinion of the farmer problem identification and serious problems are reported to the laboratory and reported to the higher authority.

Agriculture is the means of providing food and nutrition to people. The country's economy is largely dependent on agriculture. According to BBS Report-2020, 40.6 percent of the country's labor force is dependent on agriculture. The contribution of agriculture to the country's GDP is 13.31 percent. Development of agriculture means development of the country. Agriculture is one of the driving forces of our economy. At present, the amount of agricultural land is decreasing, the population is increasing, so it is necessary to take special measures for the development of agriculture. In order to develop agriculture, it is necessary to take initiatives to discover new methods, produce quality crop seeds, reduce the cost of fertilizers, and create opportunities to apply balanced fertilizers. The Global Community Organization has taken initiatives to increase seed supply by producing quality vegetable seeds.



# PROJECT **HIGHLIGHT** CELEBRATING DAYS



# CELEBRATING DIFFERENT DAYS

Serial No	Details	Attendance			
		Male	Female	Child	Total
1	Martyrs Day and International Mother Language Day	25	10		35
2	Bangabandhu Sheikh Mujibur Rahman's birthday and National Children's Day	45	25		70
3	Great Independence and National Day	30	10		40
4	World Health Day	85	35	30	150
5	Bengali New Year	45	25		70
6	May day	50	25		75
7	Mother's day	65	20		85
8	Foundation Anniversary	75	55		130
9	World Environment Day	55	20		75
10	International Day Against Drug Abuse and Illicit Promotion	95	35	30	160
11	National Mourning Day	75	35		110
12	"One Tree For One Child" Day	90	45	40	175
13	World Human Rights Day	45	25		70
14	Great Victory Day	75	20		95
Total					



# PROJECT **HIGHLIGHT** SELF-RELIANCE



# ABALAMBAN

## UPLIFTMENT SCHEME FOR DESTITUTE CHILDREN'S FAMILIES

The Global Community Organization is launching a groundbreaking initiative this year aimed at supporting destitute families with young children. In line with our practice of gifting a tree to each newborn, we also collect detailed information about the child and their family. This includes details such as the child's name and address, health history (including whether the birth was cesarean or natural, and if the child has any disabilities), the family's annual income, pregnancy-related issues, the number of doctor visits, and any major illnesses experienced.

Based on this data, we have initiated the "Suspension" program, starting with a pilot phase involving 10 children in the Harina TYAGI Unit area. This program focuses on providing a nutritious diet for both child and mother, regular supervision and counseling for child development, financial support, and routine health check-ups. Our goal is to ensure a standard and improved living environment for the children, facilitate their normal development, and address any long-term issues for a better future. This comprehensive approach aims to uplift these families and provide a strong foundation for their children's growth and well-being.





# PROJECT HIGHLIGHT UNIQUE





# CAMPAIGN

## AWARENESS CAMPAIGN ON CONTEMPORARY ISSUES

Serial No	Details	Attendance				PLACE
		Male	Female	Child	Total	
1	Drug awareness campaign among permanent population	110	45		155	Pakuria Union Parishad
2	Seminars with people working on nursery development and orchards	25	5		30	office
3	Training on effective business planning and nursery creation and maintenance	30	15		45	office
4	Encouraging permanent population to plant trees Awareness campaign on tree conservation	95	45		140	Pakuria Union Parishad
5	Medical campaign	75	60	45	180	Pakuria Union Parishad
6	Anti-drug movement	90	15		105	Bagha Upazila





# EVENTS

## VARIOUS EVENTS ON CURRENT

9.1

Serial No	Details	Attendance				PLEAC
		Male	Female	Child	Total	
1	Safer life from lightning with safe-planting	45	25	35	150	Bagha Upazila in different places
2	Shadow	195	155	85	435	Bagha Upazila in different places
3	Cluster village	245	155	95	600	Different clusters of villages
4	Distribution of winter clothes	65	25	35	145	Bagha Upazila in different places
5	Relief assistance	75	45	35	155	Bagha Upazila in different places
6	Eid gift	45	25	35	105	Bagha Upazila in different places
7	Iftar party	265	165		400	Bagha, Puthia, Charghat Upazila
8	Competition	45	25		70	Kalidas Khali High School
9	Mask distribution	160	145	95	400	Bagha Upazila







**GLOBAL**  
**COMMUNITY**  
**LOCAL**

\*Based on current reporting. Subject to change.



**5**  
**NEW**  
**UPZILA**  
**ADDED IN 2023**



# BANGLADESH IMPACT

## INTERNATIONAL

In 2023, we launched the Social Forestry Fund in the One Tree Planted, United States to initiate a diverse mix of community-based projects with the communities that need them the most. From this pilot program grew our global portfolio of 2023 Social Forestry Fund projects. So far, these projects have planted over 50,033 trees in 53 cities around the world!

**21,177+**  
PEOPLE

**400+**  
VOLUNTEERS  
ENGAGED

**24**  
JOBS  
SUPPORTED

**99,821**  
TOTAL TREES





A person wearing a green safety vest and a cap is looking at a tablet in a forest. The background is filled with green trees and foliage.

# PLANTED GLOBAL SITE

Our project managers and monitoring specialists visited 5 projects in 5 districts in 2023! While there, they checked on the growth of planted trees, captured drone data, empowered key partners with high quality monitoring technology, and provided training.

**2** PARTNERS VISITED

**5** DISTRICTS

# MONITORING DRONE

Drones continued to play a big role in our monitoring program in 2023. Our project managers are equipped with drones and trained to collect drone data on site visits. We continued to provide trainings and drones for key partners.

In areas where drone imagery can't be captured by One Tree Planted staff or planting partners, we have developed partnerships with organizations that allow us to scale our drone data collection needs.

TRAINING  
PROVIDED 10





# OUR PARTNER

While all of our planting partners are incredible, we'd like to recognize a few. These partnerships have enabled us to grow our impact in important regions, collaborating on projects that span several states and countries or are making a profound impact on the communities where they work.





# COLLABORATION IS KEY

While all of our planting partners are incredible, we'd like to recognize a few. These partnerships have enabled us to grow our impact in important regions, collaborating on projects that span several districts or are making a profound impact on the communities where they work.

Project stands as a distinguished and long-lasting partner in our mission to combat poverty through community empowerment and entrepreneurship training. The organization focuses

on bolstering household businesses and livelihoods, collaboratively with coffee communities in Rwanda.

Our collaboration with the One Tree for One Child Project, initiated in 2018, marks one of our foundational partnerships in One Tree Planted Inc. Over the years, we have jointly planted more than 50,000 trees.



# ECONOMIC AND SOCIAL IMPACTS

In addition to the many environmental benefits of reforestation, our planting projects help adjacent communities by creating jobs, providing training, and supporting families with improved income and access to food. Combining these outcomes not only helps those in need, it ensures the planted trees are protected from future subsistence activities.

**JOBS CREATED**

**28**

**VOLUNTEERS**

**400+**

**FAMILIES BENEFITED**

**6,939**

**AGROFORESTRY PROJECTS**

**WOMEN INVOLVED**

**6,939**

**6,939**

\*Based on current reporting. Subject to change.



**6,939**  
**WOMEN**  
**INVOLVED**  
**2023 PROJECTS**





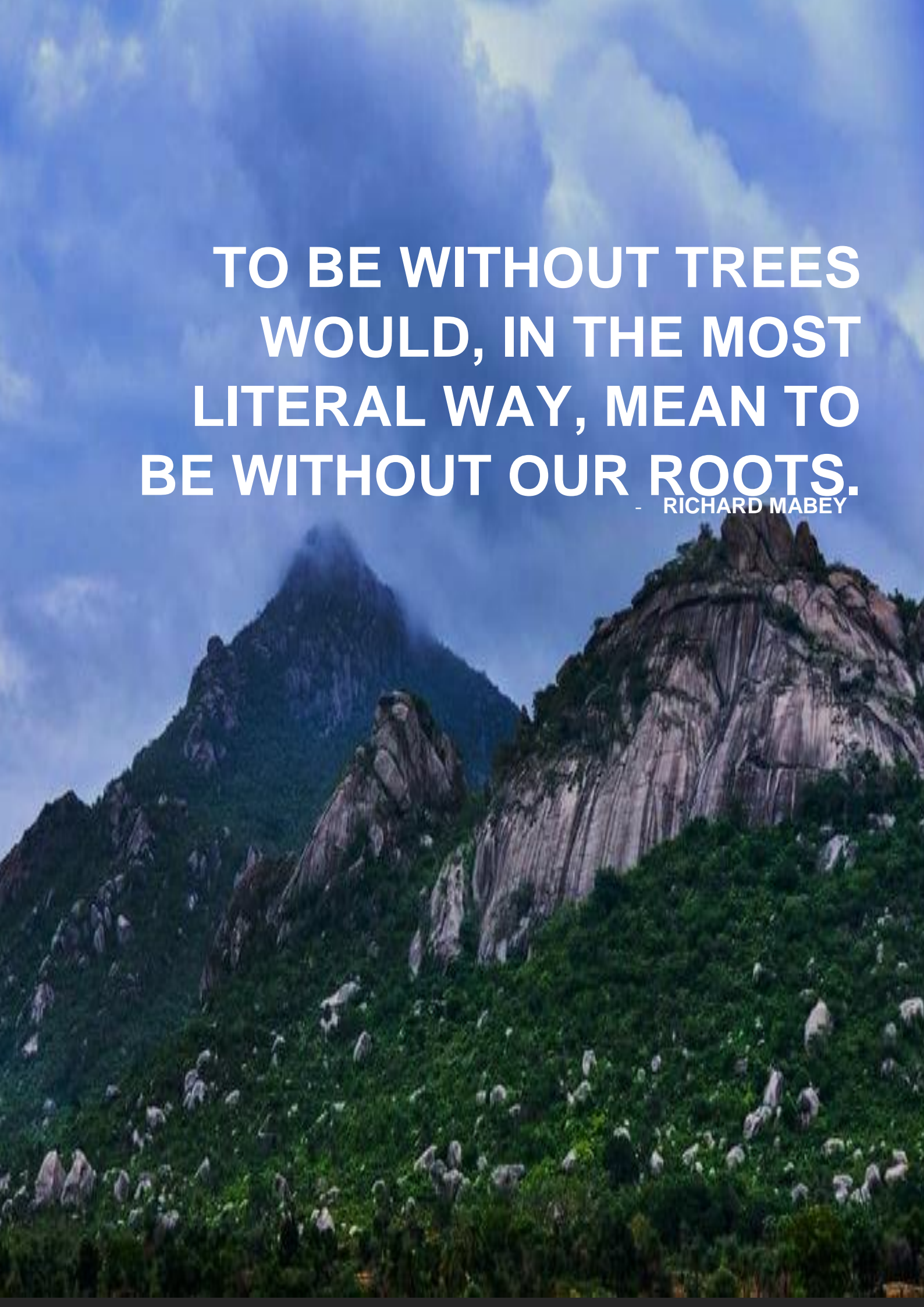
# 2023 STORY



GLOBAL  
Community C







**TO BE WITHOUT TREES  
WOULD, IN THE MOST  
LITERAL WAY, MEAN TO  
BE WITHOUT OUR ROOTS.**  
- RICHARD MABEY



**Global Community Organization is playing a significant role in the development of the environment, women, and children. The organization's issue-based activities have been successfully implemented, thanks to the specific needs of the work areas and the active involvement of beneficiaries, along with timely support from partner organizations. The Global Community Organization firmly believes that ensuring the rights of women and children is essential for empowering our future generations.**

**After overcoming various challenges, the Global Community Organization has established itself as a driving force for development. The organization continues to progress by leveraging the valuable experiences and insights gained from implementing planned and demand-driven programs over time.**

**As we celebrate the successes of our programs, we also acknowledge that any shortcomings are a shared responsibility. The sincere efforts, suggestions, and cooperation of everyone involved will guide our future endeavors. The tireless work and guidance of the grassroots members, workers, Executive Council, and General Council of the Global Community Organization are vital in expanding our reach and impact. We look forward to their continued support and contribution in our ongoing journey toward positive change.**



**ESTABLISHED : 2008**  
**GLOBAL COMMUNITY ORGANIZATION**  
**GLOBAL COMMUNITY**